

## iGoldMine™ FOR WINDOWS

### FAST AND SECURE ACCESS TO WINDOWS APPLICATIONS FROM ANYWHERE



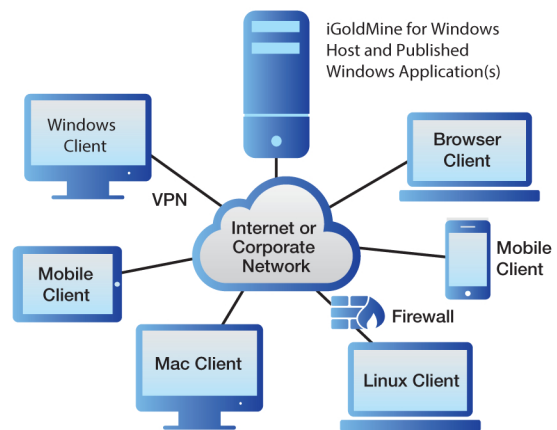
iGoldMine for Windows delivers Windows applications and documents to users anywhere, regardless of connection, location, platform, or OS. This fast and secure solution leverages your investment in Windows applications while significantly lowering your TCO.

iGoldMine for Windows makes it easy to create a secure, private cloud environment. Your Windows applications are instantly “published” over LANs, WANs, VPNs, and/or the Internet for easy remote access, while retaining all features and branding. The solution is straightforward to use, yet provides the power and features necessary to support medium- to large-scale enterprise deployments.

iGoldMine eliminates the need to rewrite Windows applications for the Web. And it’s much easier and cost-effective to deploy than complex alternatives such as Citrix XenApp or limited solutions such as Microsoft Remote Desktop Services (RDS).

iGoldMine for Windows Host software runs on a central Windows computer along with the applications being published, thereby providing multi-user access to the applications. iGoldMine Clients run on each remote device, enabling access to the central applications. iGoldMine desktop clients run natively on Windows, Linux, UNIX, and Mac OS X computers. iGoldMine mobile clients run on mobile devices such as Apple iPads, iPhones, and Android-powered tablets. iGoldMine browser clients run within Internet Explorer, Mozilla Firefox, and Apple Safari.

Included at no additional cost is iGoldMine Gateway, providing administrators with controls to monitor and manage clusters of iGoldMine for Windows Hosts supporting thousands of users. iGoldMine Gateway features include Microsoft Active Directory integration, application load balancing, and centralized management tools, allowing your company to scale to larger and more flexible deployments.



*iGoldMine delivers Windows applications and documents to users anywhere, regardless of location, platform, or OS.*

#### iGoldMine FOR WINDOWS AT A GLANCE

- Provides 32- and 64-bit Windows application access from virtually any platform
- Publishes or Web-enables existing applications in 15 minutes or less
- Retains 100% of the application’s features, functions, and branding
- Provides Windows, Linux, and OS X native clients
- Provides iOS and Android mobile clients
- Provides Internet Explorer, Mozilla Firefox, and Apple Safari browser clients
- Offers a cost-effective alternative to Citrix or Microsoft RDS
- Provides high-performance access, even over low-bandwidth connections
- Offers SSL security (up to 256-bit AES) and IPv6 support
- Supports smart card document signing and authentication for Windows clients
- Includes Client Keyboard Input Method Editor (IME), letting users switch keyboard languages on the fly while running an iGoldMine session
- Provides enterprise-ready iGoldMine Gateway for larger deployments

## WHY YOU NEED CENTRALIZED APPLICATION DELIVERY

### Reduce Hardware Costs

- Users can run all their heavy applications on a centralized host using low-cost local computers and mobile devices

### Reduce Development Costs

- Instantly turn legacy Windows applications into Web-enabled applications
- No need to reengineer applications using a Web development language

### Reduce Administration and Training Costs

- Reduce costs and improve IT efficiency by centralizing application support
- Eliminate the need to retrain users

### Target More Markets and Use Cases

- Maximize value of existing applications
- Expand user access with Web-enabled applications
- Enable mobile user access

## WHY YOU NEED iGoldMine™ FOR WINDOWS

### Ease of Use

- Simple to use, maintain, and install
- Host-centric solution with cross-platform clients
- Much easier to deploy and use than alternatives such as Citrix or Microsoft RDS

### Robust Application Support

- Application-focused solution: Derive additional value from existing application investments
- Supports 32-bit and 64-bit systems and applications, as well as multi-user/multi-session (most OS)
- Faster application startup and improved compatibility

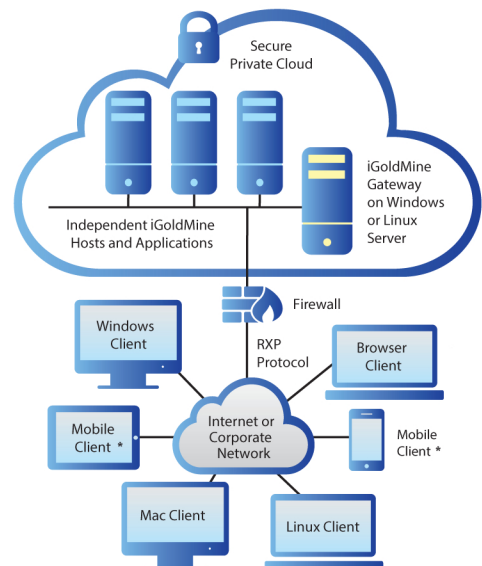
### Enhanced Security

- SSL security (up to 256-bit AES) and IPv6 support
- Integrated Windows Authentication plus support for Windows Group policy
- Support for smart card document signing and authentication for Windows clients
- Client and Host password caching

## WHY YOU NEED iGoldMine GATEWAY

- Extends iGoldMine functionality at no additional cost by providing a secure, high-availability gateway to multiple iGoldMine for Windows Hosts
- Scaleable to thousands of users
- Management tools for easy and intuitive control
- Enterprise-level authentication, access control, load balancing, and more (see iGoldMine Gateway data sheet)

*\*Based on Go-Global from Graphon Corporation, iGoldMine is certified for use with GoldMine Premium Edition and supported by GoldMine tech support* \*Go-Global is a trademark of Graphon Corporation



*iGoldMine Gateway creates a private cloud environment.*

*\*\*Mobile client access to iGoldMine Gateway will be available in Q1 of 2013.*

*\*\*Mobile client access to iGoldMine Host is currently available.*

## iGoldMine SYSTEM REQUIREMENTS

### iGoldMine Host

- Windows Server 2008 R2 with Service Pack 1\*\*
- Windows Server 2008 with Service Pack 2\*\*
- Windows Server 2003 R2 with Service Pack 2\*\*
- Windows Server 2003 with Service Pack 2\*\*
- Windows XP Professional with Service Pack 3 (x86)\*\*\*
- Windows 7 Professional, Ultimate, or Enterprise Edition with Service Pack 1 (x64)\*\*\*
- Windows Vista Ultimate or Enterprise Edition with Service Pack 2 (x86 and x64)\*\*\*

### iGoldMine Clients

- **Windows Desktop Client:** Windows 8 Pro, 7, Vista, and XP
- **Linux Desktop Client:** Red Hat Enterprise Linux 5/6, CentOS 5/6, and SUSE Linux Enterprise Desktop 11
- **Apple Mac Desktop Client:** OS X 10.5 and later
- **Apple iOS Mobile Client:** iOS 5.0 and later
- **Android Mobile Client:** Android 3.0 and later
- **Web Browser Clients:** Internet Explorer, Mozilla Firefox, and Apple Safari

### iGoldMine Gateway

- Windows Server 2008 R2 with Service Pack 1\*\*
- Windows Server 2008 with Service Pack 2\*\*
- Windows Server 2003 R2 with Service Pack 2\*\*
- Windows Server 2003 with Service Pack 2\*\*
- Red Hat Enterprise Linux 5 and 6
- SUSE Linux Enterprise Server 11

*\*\*Standard or Enterprise Edition*

*\*\*\*Windows Server is recommended for multi-user environments*